



ZACK PLAS

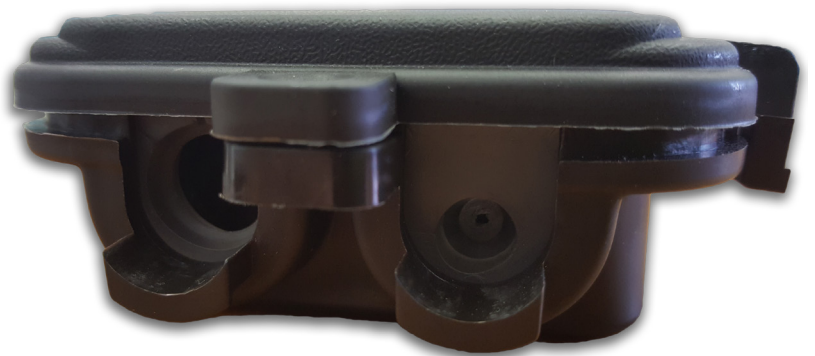
PIPE EXTRUSION & INJECTION MOULDING

4-WAY TAPPING BOX



➤ APPLICATION

The Zack Plas 4-Way Tapping Box is a distribution enclosure used to distribute fibre cables branching off to customer premises. The enclosure enables technicians & installers to create a window-cut in the fibre cable sheath to access the fibres, which can then be spurred into drop micro tubes/cables up to 8 mm in diameter. The enclosure is UV resistant and has an IP68 international sealing standard rating, allowing it to be installed in an indoor or outdoor environment.



➤ FEATURES

- Can accommodate an in-line retractable cable from 3mm to 18mm in diameter
- Can accommodate two drop tubes / cables of up to 8mm in diameter
- Cable entry port has a moulded lip to support and secure incoming cables to the tapping enclosure with a cable tie
- Suitable for direct buried applications
- Mechanical sealing allows ease of installation – IP68 sealing standard rating utilising special lubricant provided
- Impact and crush resistant
- Suitable for internal or external use
- Custom colours can be produced to suit end user



➤ KIT CONTENTS

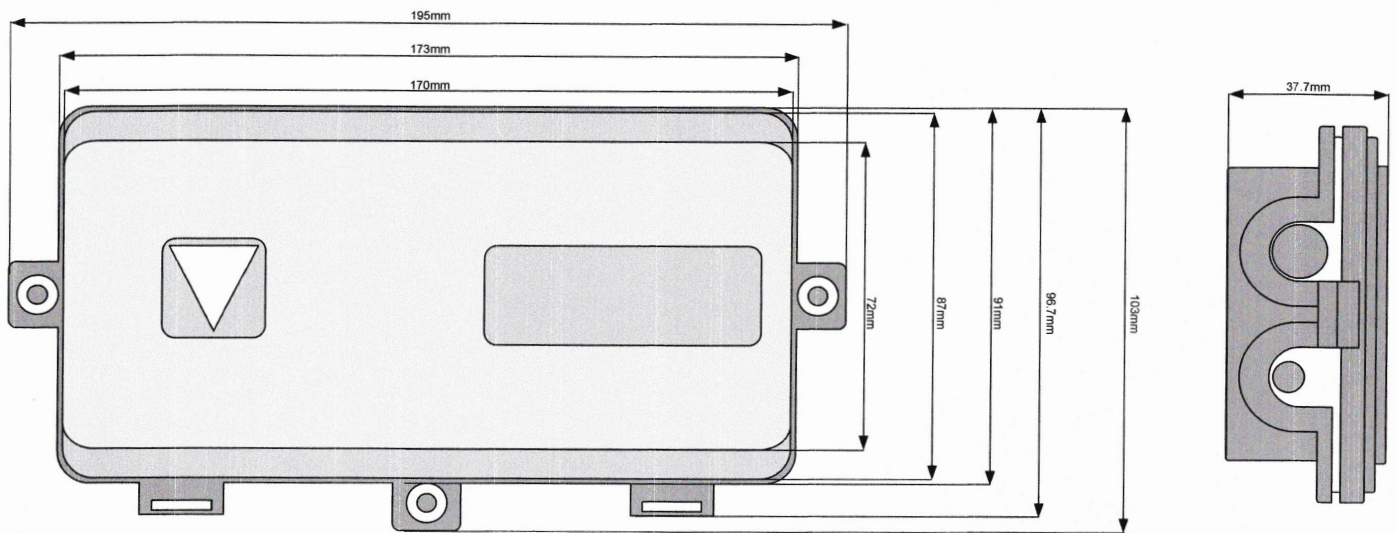
The 4-way tapping box kit includes: 1x box;
3x lid screws; lubricant; rubber seals; sealing
instructions



➤ TECHNICAL DATA

- Material: Polypropylene
- Temperature range: -10°C to +50°C (transport, installation and storage)
- Temperature range: -20°C to +60°C (In operation)
- Number of Cable Entries: 1 in-line, 2 Drops
- In-line Cable Diameter: Max 18mm
- Drop Cable Diameter: Max 8mm
- Fibre bending radius: Minimum 15mm (ITU-T G.657 A2 fibre)
- Cable retention: 18mm cable: 350N
- mm drop tube: 150N
- Water immersion: IP68 (No water ingress at 1m water pressure for 7 days)
- Impact resistance: 10Nm @ 20 °C, radius 200mm
- Crush resistance: 1000N @ 20 °C on top surface of the box

L x W x H	Adaptor Plate	Cable ports	Max Splice Tray capacity	Max. Diameter of cable (mm)
201 x 105 x 37 (mm)	none	1 x In-line 2 x Branch	none	1 x In-line port < 18mm 2 x Branch port < 10mm

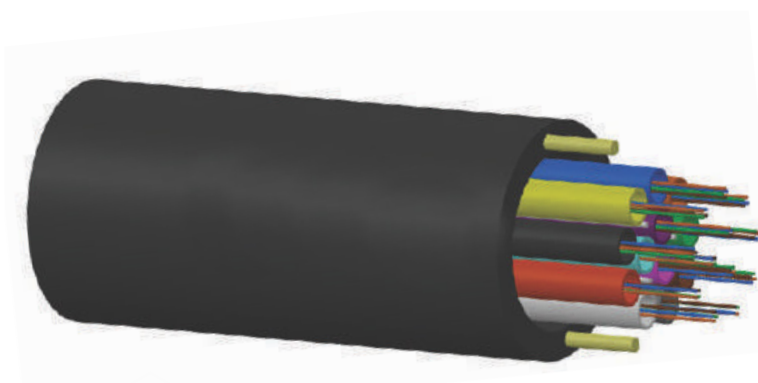


RETRACTABLE FIBRE OPTIC CABLE (SM G657A2 250MM)

Our Sterlite Tech Retractable Cable is quick and easy to install and uses the minimal number of tools, training and installation equipment. Once the fibre cable is accessed, excess fibre is then pulled back out of the duct and branched to the home/business through a dedicated drop duct. The fibre installation to inside the home/business is then carried out by pushing or pulling the fibre line. With this retractable cabling system it is possible to easily select and remove more than 100m of fibre by retracting micro-modules.

Sterlite Retract is an incredibly flexible duct system which can be accessed at any point along its length. The fibre can be easily accessed and configured to drop directly to a home / business where fibre provision is required. Our Sterlite Tech Retractable Cable offers a lot of advantages over traditional cabling solutions. E.g. 4-8 times more fibre drops can be made from an existing 32/40mm duct compared to traditional cables.

A simple to install drop closure is used at every tap out (branch) point along the route to the home with up to 4 drops per closure. The Sterlite Tech Retractable Cable can be pulled into a duct, installed into an open trench or fixed into a vertical riser shaft.





ZACK PLAS

PIPE EXTRUSION & INJECTION MOULDING

ZACK PLAS - Pipe extrusion & injection moulding

Reg No. 2017/371338/07 | VAT No. 442 028 0432

Head Office: 5 Marconi Crescent, Montague Gardens, 7441, Cape Town

Tel: +27(0) 82 450 0997 (Joop Robbertse)

Tel: +27(0) 82 788 9394 (Riaan Botes)

E-mail: info@zackplas.co.za